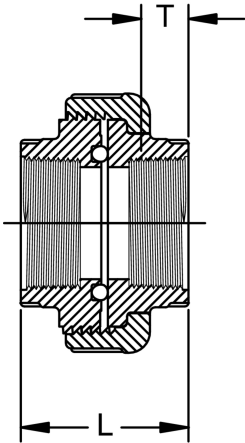
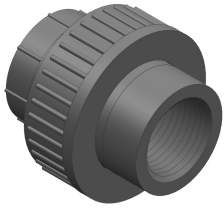


## Union Type 375 (FPT X FPT) Schedule 80 Harvel® PVC

- 235 psi @ 73°F (16.2 bar @ 22.7°C)



Size (inch)	P/L	EPDM Part No.	FKM Part No.	Pack Qty	L (inch)	T (inch)
½	608	<b>898-375-005</b>	<b>858-375-005</b>	5	2.06	0.75
¾	608	<b>898-375-007</b>	<b>858-375-007</b>	5	2.11	0.79
1	608	<b>898-375-010</b>	<b>858-375-010</b>	5	2.60	1.01
1 ¼	608	<b>898-375-012</b>	<b>858-375-012</b>	5	2.80	1.06
1 ½	608	<b>898-375-015</b>	<b>858-375-015</b>	5	2.76	1.06
2	608	<b>898-375-020</b>	<b>858-375-020</b>	2	2.93	1.09

The technical data are not binding. They neither constitute expressly warranted characteristics nor guaranteed properties nor a guaranteed durability. They are subject to modification. Our General Terms of Sale apply.

Georg Fischer Piping Systems Ltd, Postfach, CH-8201 Schaffhausen/Switzerland

Phone +41 -(0)52-631 1111

e-mail: [info.ps@georgfischer.com](mailto:info.ps@georgfischer.com)

Internet: <http://www.gfps.com>