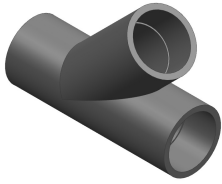


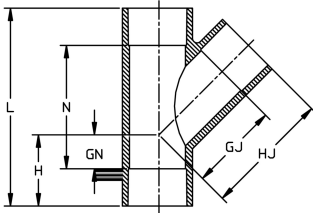
45° Wye (S x S x S) Schedule 80 Harvel® PVC



1-1/2" - 2" 235 psi @ 72°F (16.2 bar @ 22.7°C)

3" - 6" 150 psi @ 72°F (10.3 bar @ 22.7°C)

8" - 24" 100 psi @ 72°F (6.9 bar @ 22.7°C)



Size (inch)	P/L	Part No.	Pack Qty	GJ (inch)	GN (inch)	H (inch)	HJ (inch)	L (inch)	N (inch)	Design
1 1/2	608	870-015	20	2.79	1.20	2.60	4.18	6.80	4.02	SL
2	608	870-020	10	3.56	1.36	2.87	5.07	7.99	4.97	SL
2 1/2	H02	870-025S	1	3.97	0.84	2.59	5.72	8.31	3.97	SL
3	608	870-030	4	4.91	1.82	3.73	6.83	10.45	6.62	SL
4	608	870-040	4	6.26	2.06	4.41	8.61	12.94	8.24	SL
6	608	870-060	2	8.38	1.85	4.90	11.44	16.50	10.39	HS
8	608	870-080	1	11.09	1.90	5.92	15.11	21.35	13.30	HS
10	A33	875-100N	1	19.75	5.50	11.25	24.75	31.75	21.75	FAB
12	A33	875-120N	1	22.63	6.50	12.50	28.63	37.50	25.50	FAB
14	A33	875-140N	1	25.75	7.00	14.00	32.75	41.75	27.75	FAB
16	A33	875-160N	1	28.88	7.75	16.00	36.88	47.25	31.25	FAB
18	A33	875-180N	1	32.50	8.50	17.50	41.50	53.00	35.00	FAB
20	A33	875-200N	1	35.50	9.50	19.50	45.50	58.75	38.75	FAB
24	A33	875-240N	1	42.00	11.00	23.00	54.00	70.00	46.00	FAB

The technical data are not binding. They neither constitute expressly warranted characteristics nor guaranteed properties nor a guaranteed durability. They are subject to modification. Our General Terms of Sale apply.

Georg Fischer Piping Systems Ltd, Postfach, CH-8201 Schaffhausen/Switzerland

Phone +41 -(0)52-631 1111

e-mail: info.ps@georgfischer.com

Internet: <http://www.gfps.com>