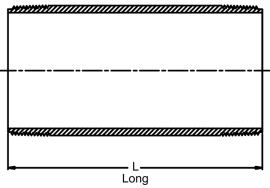
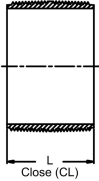
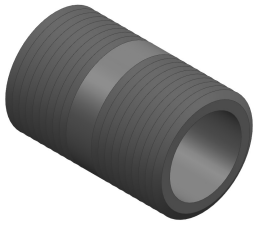


# Data sheet

valid from: 3/19/19



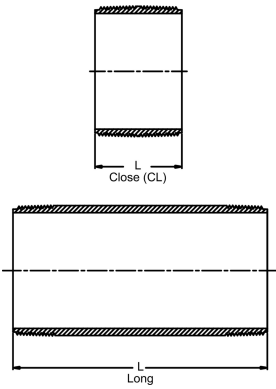
## Nipple (MPT x MPT) Schedule 80 Harvel® PVC



Size (inch)	P/L	Part No.	Pack Qty	L (inch)	Design
1/2 x CL	608	<b>861-077</b>	50	1.13	MOLD
1/2 x 2	608	<b>861-079</b>	25	2.00	MOLD
1/2 x 3	608	<b>861-081</b>	25	3.00	MOLD
1/2 x 4	608	<b>861-082</b>	25	4.00	MOLD
1/2 x 5	608	<b>861-083</b>	25	5.00	MOLD
1/2 x 6	608	<b>861-084</b>	25	6.00	MOLD
1/2 x 8	608	<b>861-086</b>	25	8.00	FAB
1/2 x 10	608	<b>861-087</b>	25	10.00	FAB
1/2 x 12	608	<b>861-088</b>	25	12.00	FAB
3/4 x CL	608	<b>861-104</b>	25	1.38	MOLD
3/4 x 2	608	<b>861-020</b>	25	2.00	MOLD
3/4 x 3	608	<b>861-106</b>	25	3.00	MOLD
3/4 x 4	608	<b>861-107</b>	25	4.00	MOLD
3/4 x 5	608	<b>861-108</b>	25	5.00	MOLD
3/4 x 6	608	<b>861-109</b>	25	6.00	MOLD
3/4 x 8	608	<b>861-110</b>	25	8.00	FAB
3/4 x 10	608	<b>861-111</b>	25	10.00	FAB
3/4 x 12	608	<b>861-112</b>	25	12.00	FAB
1 x CL	608	<b>861-133</b>	25	1.50	MOLD
1 x 2	608	<b>861-134</b>	25	2.00	MOLD
1 x 3	608	<b>861-135</b>	25	3.00	MOLD
1 x 4	608	<b>861-136</b>	25	4.00	MOLD
1 x 5	608	<b>861-137</b>	25	5.00	MOLD
1 x 6	608	<b>861-138</b>	25	6.00	MOLD
1 x 8	608	<b>861-139</b>	25	8.00	FAB
1 x 10	608	<b>861-140</b>	25	10.00	FAB
1 x 12	608	<b>861-141</b>	25	12.00	FAB
1 1/4 x CL	608	<b>861-170</b>	25	1.63	MOLD
1 1/4 x 2	608	<b>861-171</b>	25	2.00	MOLD
1 1/4 x 3	608	<b>861-172</b>	25	3.00	MOLD
1 1/4 x 4	608	<b>861-173</b>	25	4.00	MOLD
1 1/4 x 5	608	<b>861-174</b>	25	5.00	MOLD
1 1/4 x 6	608	<b>861-175</b>	25	6.00	MOLD
1 1/4 x 8	608	<b>861-176</b>	25	8.00	FAB
1 1/4 x 10	608	<b>861-177</b>	25	10.00	FAB
1 1/4 x 12	608	<b>861-178</b>	25	12.00	FAB
1 1/2 x CL	608	<b>861-213</b>	25	1.75	MOLD
1 1/2 x 2	608	<b>861-214</b>	25	2.00	MOLD
1 1/2 x 3	608	<b>861-215</b>	25	3.00	MOLD
1 1/2 x 4	608	<b>861-216</b>	25	4.00	MOLD
1 1/2 x 5	608	<b>861-217</b>	25	5.00	MOLD
1 1/2 x 6	608	<b>861-218</b>	25	6.00	MOLD
1 1/2 x 8	608	<b>861-219</b>	25	8.00	FAB
1 1/2 x 10	608	<b>861-220</b>	25	10.00	FAB
1 1/2 x 12	608	<b>861-221</b>	25	12.00	FAB
2 x CL	608	<b>861-251</b>	25	2.00	MOLD
2 x 2 1/2	608	<b>861-252</b>	25	2.50	MOLD
2 x 3	608	<b>861-253</b>	25	3.00	MOLD
2 x 4	608	<b>861-254</b>	25	4.00	MOLD
2 x 5	608	<b>861-255</b>	25	5.00	MOLD
2 x 6	608	<b>861-256</b>	25	6.00	MOLD
2 x 8	608	<b>861-257</b>	25	8.00	FAB
2 x 10	608	<b>861-258</b>	25	10.00	FAB
2 x 12	608	<b>861-259</b>	25	12.00	FAB
2 1/2 x CL	608	<b>861-291</b>	10	2.50	FAB
2 1/2 x 4	608	<b>861-295</b>	10	4.00	FAB
2 1/2 x 3	608	<b>861-292</b>	10	3.00	FAB

# Data sheet

valid from: 3/19/19



Size (inch)	P/L	Part No.	Pack Qty	L (inch)	Design
2 1/2 x 5	608	<b>861-296</b>	10	5.00	FAB
2 1/2 x 6	608	<b>861-297</b>	10	6.00	FAB
2 1/2 x 8	608	<b>861-298</b>	10	8.00	FAB
2 1/2 x 10	608	<b>861-299</b>	10	10.00	FAB
2 1/2 x 12	608	<b>861-300</b>	10	12.00	FAB
3 x CL	608	<b>861-338</b>	10	2.63	FAB
3 x 3	608	<b>861-340</b>	10	3.00	FAB
3 x 4	608	<b>861-341</b>	10	4.00	FAB
3 x 5	608	<b>861-342</b>	10	5.00	FAB
3 x 6	608	<b>861-343</b>	10	6.00	FAB
3 x 8	608	<b>861-344</b>	10	8.00	FAB
3 x 10	608	<b>861-345</b>	10	10.00	FAB
3 x 12	608	<b>861-346</b>	10	12.00	FAB
4 x CL	608	<b>861-422</b>	10	2.88	FAB
4 x 4	608	<b>861-423</b>	10	4.00	FAB
4 x 5	608	<b>861-425</b>	10	5.00	FAB
4 x 6	608	<b>861-426</b>	10	6.00	FAB
4 x 8	608	<b>861-427</b>	5	8.00	FAB
4 x 10	608	<b>861-428</b>	5	10.00	FAB
4 x 12	608	<b>861-429</b>	5	12.00	FAB

The technical data are not binding. They neither constitute expressly warranted characteristics nor guaranteed properties nor a guaranteed durability. They are subject to modification. Our General Terms of Sale apply.

Georg Fischer Piping Systems Ltd, Postfach, CH-8201 Schaffhausen/Switzerland

Phone +41 -(0)52-631 1111

e-mail: [info.ps@georgfischer.com](mailto:info.ps@georgfischer.com)

Internet: <http://www.gfps.com>