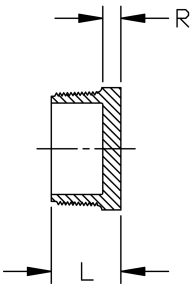
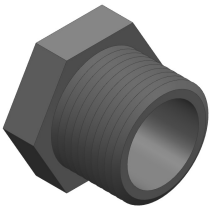


## Plug (MPT) Schedule 80 Harvel® PVC



Size (inch)	P/L	Part No.	Pack Qty	L (inch)	R (inch)	Design
¼	608	<b>850-002</b>	50	0.81	0.22	HS
⅜	608	<b>850-003</b>	50	0.83	0.22	HS
½	608	<b>850-005</b>	50	0.98	0.22	HS
¾	608	<b>850-007</b>	50	1.06	0.25	HS
1	608	<b>850-010</b>	25	1.24	0.27	HS
1 ¼	608	<b>850-012</b>	25	1.33	0.31	HS
1 ½	608	<b>850-015</b>	20	1.38	0.34	HS
2	608	<b>850-020</b>	10	1.47	0.39	HS
2 ½	608	<b>850-025</b>	10	1.95	0.38	HS
3	608	<b>850-030</b>	5	1.98	0.38	HS
4	608	<b>850-040</b>	5	2.16	0.39	HS
6	A33	<b>850-060N</b>	1	2.00	0.75	FAB
8	A33	<b>850-080N</b>	1	2.00	0.75	FAB
10	A33	<b>850-100N</b>	1	2.00	0.75	FAB
12	A33	<b>850-120N</b>	1	2.00	0.75	FAB

The technical data are not binding. They neither constitute expressly warranted characteristics nor guaranteed properties nor a guaranteed durability. They are subject to modification. Our General Terms of Sale apply.

Georg Fischer Piping Systems Ltd, Postfach, CH-8201 Schaffhausen/Switzerland

Phone +41 -(0)52-631 1111

e-mail: [info.ps@georgfischer.com](mailto:info.ps@georgfischer.com)

Internet: <http://www.gfps.com>