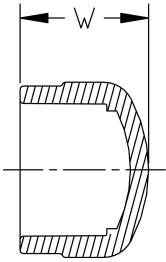
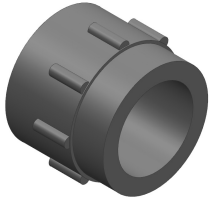


Cap (S) Schedule 80 Harvel® PVC



Size (inch)	P/L	Part No.	Pack Qty	W (inch)	Design
¼	608	847-002	50	0.96	HS
⅜	608	847-003	50	1.11	HS
½	608	847-005	50	1.30	HS
¾	608	847-007	50	1.46	HS
1	608	847-010	25	1.66	HS
1 ¼	608	847-012	15	1.89	HS
1 ½	608	847-015	10	2.08	HS
2	608	847-020	5	2.32	HS
2 ½	608	847-025	5	2.61	HS
3	608	847-030	5	3.06	HS
4	608	847-040	5	3.69	HS
6	608	847-060	2	4.86	HS
8	608	847-080	2	6.25	SL
10	602	847-100	1	7.92	SL
12	602	847-120	1	9.37	SL
14	A33	847-140N	1	5.75	FAB
16	A33	847-160N	1	7.00	FAB
18	A33	847-180N	1	8.25	FAB
20	A33	847-200N	1	8.75	FAB
24	A33	847-240N	1	10.25	FAB

The technical data are not binding. They neither constitute expressly warranted characteristics nor guaranteed properties nor a guaranteed durability. They are subject to modification. Our General Terms of Sale apply.

Georg Fischer Piping Systems Ltd, Postfach, CH-8201 Schaffhausen/Switzerland

Phone +41 -(0)52-631 1111

e-mail: info.ps@georgfischer.com

Internet: <http://www.gfps.com>