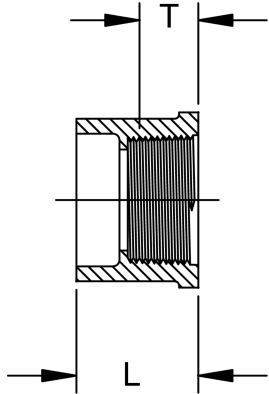
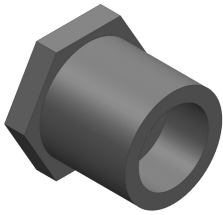


## Flush Style Reducer Bushing (SPG x FPT) Schedule 80 Harvel® PVC



Size (inch)	P/L	Part No.	Pack Qty	L (inch)	T (inch)	Design
3/8 x 1/4	608	<b>838-052E</b>	50	1.59	0.60	Extended
1/2 x 1/4	608	<b>838-072</b>	50	1.14	0.61	FLUSH
1/2 x 3/8	608	<b>838-073</b>	50	1.21	0.60	FLUSH
3/4 x 1/4	608	<b>838-098</b>	50	1.13	0.61	FLUSH
3/4 x 1/2	608	<b>838-101</b>	50	1.28	0.77	FLUSH
1 x 1/2	608	<b>838-130</b>	50	1.42	0.76	FLUSH
1 x 3/4	608	<b>838-131</b>	50	1.41	0.81	FLUSH
1 1/4 x 1/2	608	<b>838-166</b>	15	1.56	0.75	FLUSH
1 1/4 x 3/4	608	<b>838-167</b>	15	1.56	0.79	FLUSH
1 1/4 x 1	608	<b>838-168</b>	15	1.56	0.99	FLUSH
1 1/2 x 1/2	608	<b>838-209</b>	15	1.68	0.76	FLUSH
1 1/2 x 3/4	608	<b>838-210</b>	15	1.69	0.79	FLUSH
1 1/2 x 1	608	<b>838-211</b>	15	1.68	0.99	FLUSH
1 1/2 x 1 1/4	608	<b>838-212</b>	15	1.69	1.10	FLUSH
2 x 1/2	608	<b>838-247</b>	10	1.80	0.77	FLUSH
2 x 3/4	608	<b>838-248</b>	10	1.80	0.80	FLUSH
2 x 1	608	<b>838-249</b>	10	1.80	0.99	FLUSH
2 x 1 1/4	608	<b>838-250</b>	10	1.81	1.02	FLUSH
2 x 1 1/2	608	<b>838-251</b>	10	1.88	1.04	FLUSH
2 1/2 x 1 1/2	608	<b>838-291</b>	5	2.24	1.07	FLUSH
2 1/2 x 2	608	<b>838-292</b>	5	2.12	1.10	FLUSH
3 x 2	608	<b>838-338</b>	5	2.42	1.07	FLUSH
3 x 2 1/2	608	<b>838-339</b>	5	2.25	1.61	FLUSH
4 x 2	608	<b>838-420</b>	5	2.71	1.10	FLUSH
4 x 3	608	<b>838-422</b>	5	2.75	1.62	FLUSH

The technical data are not binding. They neither constitute expressly warranted characteristics nor guaranteed properties nor a guaranteed durability. They are subject to modification. Our General Terms of Sale apply.

Georg Fischer Piping Systems Ltd, Postfach, CH-8201 Schaffhausen/Switzerland

Phone +41 -(0)52-631 1111

e-mail: [info.ps@georgfischer.com](mailto:info.ps@georgfischer.com)

Internet: <http://www.gfps.com>