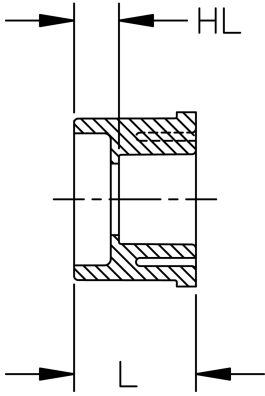
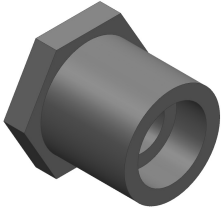


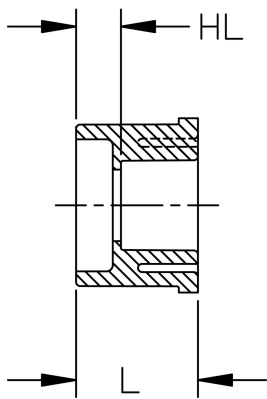
Flush Style Reducer Bushing (SPG x S) Schedule 80 Harvel® PVC



Size (inch)	P/L	Part No.	Pack Qty	HL (inch)	L (inch)	Design
½ x ¼	608	837-072	50	0.47	1.15	FLUSH
½ x ⅜	608	837-073	50	0.33	1.09	FLUSH
¾ x ½	608	837-101	50	0.42	1.30	FLUSH
1 x ½	608	837-130	50	0.55	1.44	FLUSH
1 x ¾	608	837-131	50	0.41	1.43	FLUSH
1 ¼ x ½	608	837-166	25	0.66	1.55	FLUSH
1 ¼ x ¾	608	837-167	25	0.56	1.57	FLUSH
1 ¼ x 1	608	837-168	25	0.44	1.59	FLUSH
1 ½ x ½	608	837-209	25	0.78	1.69	FLUSH
1 ½ x ¾	608	837-210	25	0.67	1.68	FLUSH
1 ½ x 1	608	837-211	25	0.55	1.69	FLUSH
1 ½ x 1 ¼	608	837-212	25	0.44	1.72	FLUSH
2 x ½	608	837-247	10	0.91	1.81	FLUSH
2 x ¾	608	837-248	10	0.79	1.82	FLUSH
2 x 1	608	837-249	10	0.68	1.83	FLUSH
2 x 1 ¼	608	837-250	10	0.54	1.81	FLUSH
2 x 1 ½	608	837-251	10	0.40	1.81	FLUSH
2 ½ x 1 ½	608	837-291	5	0.79	2.31	FLUSH
2 ½ x 2	608	837-292	5	0.47	2.10	FLUSH
3 x 1	608	837-335	5	1.27	2.42	FLUSH
3 x 1 ¼	608	837-336FB	5	1.43	2.71	BUSH
3 x 1 ½	608	837-337	5	0.89	2.43	FLUSH
3 x 2	608	837-338	5	0.86	2.42	FLUSH
3 x 2 ½	608	837-339	5	0.38	2.27	FLUSH
4 x 2	608	837-420	5	1.14	2.70	FLUSH
4 x 3	608	837-422	5	0.77	2.74	FLUSH
6 x 3	608	837-530	2	1.74	3.65	FLUSH
6 x 4	608	837-532	2	1.42	3.67	FLUSH
8 x 6	608	837-585	2	1.69	4.66	FLUSH
10 x 4	602	837-623FB	1	4.01	6.26	BUSH
10 x 6	602	837-626	1	2.59	5.69	FLUSH
10 x 8	602	837-628	1	1.62	5.72	FLUSH
12 x 6	602	837-666FB	1	4.26	7.35	BUSH
12 x 8	602	837-668	1	2.66	6.76	FLUSH
12 x 10	602	837-670	1	1.66	6.77	FLUSH
14 x 4	A33	837-696N	1	5.50	7.50	FAB
14 x 6	A33	837-698N	1	4.50	7.50	FAB
14 x 8	A33	837-700N	1	3.50	7.50	FAB
14 x 10	A33	837-702N	1	2.50	7.50	FAB
14 x 12	A33	837-704N	1	1.50	7.50	FAB
16 x 4	A33	837-730N	1	6.50	8.50	FAB
16 x 6	A33	837-732N	1	5.50	8.50	FAB
16 x 8	A33	837-734N	1	4.50	8.50	FAB
16 x 10	A33	837-736N	1	3.50	8.50	FAB
16 x 12	A33	837-738N	1	2.50	8.50	FAB
16 x 14	A33	837-740N	1	1.50	8.50	FAB
18 x 4	A33	837-784N	1	7.50	9.50	FAB
18 x 6	A33	837-786N	1	6.50	9.50	FAB
18 x 8	A33	837-788N	1	5.50	9.50	FAB
18 x 10	A33	837-790N	1	4.50	9.50	FAB
18 x 12	A33	837-792N	1	3.50	9.50	FAB
18 x 14	A33	837-794N	1	2.50	9.50	FAB
18 x 16	A33	837-796N	1	1.50	9.50	FAB
20 x 4	A33	837-814N	1	8.50	10.50	FAB
20 x 6	A33	837-816N	1	7.50	10.50	FAB
20 x 8	A33	837-818N	1	6.50	10.50	FAB
20 x 10	A33	837-820N	1	5.50	10.50	FAB

Data sheet

valid from: 3/21/19



Size (inch)	P/L	Part No.	Pack Qty	HL (inch)	L (inch)	Design
20 x 12	A33	837-822N	1	4.50	10.50	FAB
20 x 14	A33	837-824N	1	3.50	10.50	FAB
20 x 16	A33	837-826N	1	2.50	10.50	FAB
20 x 18	A33	837-828N	1	1.50	10.50	FAB
24 x 4	A33	837-904N	1	10.50	12.50	FAB
24 x 6	A33	837-906N	1	9.50	12.50	FAB
24 x 8	A33	837-908N	1	8.50	12.50	FAB
24 x 10	A33	837-910N	1	7.50	12.50	FAB
24 x 12	A33	837-912N	1	6.50	12.50	FAB
24 x 14	A33	837-914N	1	5.50	12.50	FAB
24 x 16	A33	837-916N	1	4.50	12.50	FAB
24 x 18	A33	837-918N	1	3.50	12.50	FAB
24 x 20	A33	837-920N	1	2.50	12.50	FAB

The technical data are not binding. They neither constitute expressly warranted characteristics nor guaranteed properties nor a guaranteed durability. They are subject to modification. Our General Terms of Sale apply.

Georg Fischer Piping Systems Ltd, Postfach, CH-8201 Schaffhausen/Switzerland

Phone +41 -(0)52-631 1111

e-mail: info.ps@georgfischer.com

Internet: <http://www.gfps.com>