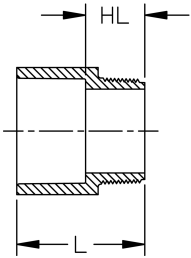
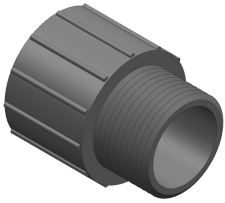


## Male Adapter (S x MPT) Schedule 80 Harvel® PVC



Size (inch)	P/L	Part No.	Pack Qty	HL (inch)	L (inch)	Design
½	608	<b>836-005</b>	50	0.94	1.85	SL
¾	608	<b>836-007</b>	25	1.05	2.03	HS
1	608	<b>836-010</b>	25	1.22	2.38	HS
1 ¼	608	<b>836-012</b>	15	1.28	2.56	HS
1 ½	608	<b>836-015</b>	10	1.30	2.69	HS
2	608	<b>836-020</b>	5	1.32	2.83	HS
2 ½	608	<b>836-025</b>	5	1.87	3.70	HS
3	608	<b>836-030</b>	5	1.99	3.90	HS
4	608	<b>836-040</b>	5	2.15	4.40	HS
6	A33	<b>836-060N</b>	1	3.25	6.25	FAB
8	A33	<b>836-080N</b>	1	3.50	7.50	FAB
10	A33	<b>836-100N</b>	1	4.18	9.18	FAB
12	A33	<b>836-120N</b>	1	4.63	10.63	FAB

The technical data are not binding. They neither constitute expressly warranted characteristics nor guaranteed properties nor a guaranteed durability. They are subject to modification. Our General Terms of Sale apply.

Georg Fischer Piping Systems Ltd, Postfach, CH-8201 Schaffhausen/Switzerland

Phone +41 -(0)52-631 1111

e-mail: [info.ps@georgfischer.com](mailto:info.ps@georgfischer.com)

Internet: <http://www.gfps.com>